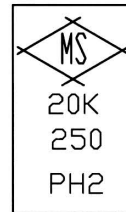


Marking(EX.)



No.	DESCRIPTION	DATE	SIGN	Nonnal Pressure	JIS 20K
				Test Press. of Shell	5.1 MPa
				Test Press. of Seat	3.74 MPa
				Max.Working Temp.	425 °C
				Apply Medium	Water Steam Oil
Design and Manufacture Standard					
Design and Manufacture Standard				JIS B2071, API600	
Inspection and Test Standard				JIS B2003	
Face to Face Dimension				JIS B2002	
Flange Dimension				JIS B2220	

26	GREASE NIPPLE	Steel	1	
25	SET SCREW	A193-B7	1	
24	LANTERN RING	A182-F6a	1	
22	HANDLE NUT	CARBON S.	1	
21	HANDWHEEL	Ductile Iron	1	
20	SLEEVE NUT	CARBON S.	1	
19	SLEEVE	A439-D2	1	
18	BEARING	Commerical	2	
17	YOKE	A216-WCB	1	
16	NUT	A194 2H	2	
15	EYE BOLT	A193 B7	2	
14	GLAND FLANGE	A216-WCB	1	
13	GLAND	A182-F6a	1	
12	YOKE BOLT	A193 B7	4	
11	YOKE BOLT NUT	A194 2H	4	
10	PACKING	Graphite	1s	T#2205+2250 Eq.
9	BACK SEAT	A182-F6a	1	
8	BONNET	SCPH2	1	
7	GASKET	Graphite	1	Spiral Wound
6	BONNET BOLT	A193 B7		
5	BONNET NUT	A194 2H		
4	STEM	A182-F6a	1	
3	DISC	SCPH2	1	Stellite Faced
2	SEAT RING	A105	2	Stellite Faced
1	BODY	SCPH2	1	

PART NO.	PART NAME	MATERIAL	Q'TY	REMARK
----------	-----------	----------	------	--------

CAST STEEL JIS 20K FLANGED  
 MANUAL OPERATED GATE VALVE  
 OUTSIDE SCREW STEM  
 SIZE 250A-300A

APPROVED BY	CHECKED BY	DRAWN BY	DRAWING No.
F.Makimura	M.Toyama	H.Hosoi	HCH010345
MAY.16.2009	MAY.16.2009	MAY.16.2009	

**MAKIMURA MFG CO LTD**  
 HIKONE SHIGA JAPAN

Unit: mm

SIZE(A)	d	L	JIS B 2220 20K FLANGE						H	W	Weight (kg)	REMARK
			D	C	g	t	f	n-φh				
250	254	457	430	380	345	34	2	12-27	1240	450	334	
300	305	502	480	430	395	36	3	16-27	1425	500	450	